



TM

PACIFIC DESIGN HOUSE



Pacific Exports and Imports

Pacific Exports & Imports is a creative, innovative & design driven organisation and premium export house based in New Delhi and Jaipur.

Pacific has been making high-quality womenswear since its inception in 1990. Pacific's association with Japanese clients helped setting high-quality standards and imbibe the values like - quality, discipline, timely delivery, and persistence to deliver the best.

On entering the French and European market, we quickly built great associations and trust with customers that created a chain of recommendation-based marketing where we get endorsed by our customers, opening more doors. Europe is now our second biggest fashion market. The success in the French market inspired us to start Pacific Design House under Pacific Exports.

We built a reputation in France as a manufacturer and exporter of womens garments which are price competitive and of high quality.

Our efforts are based on the principle that if the customer grows, we grow. Our journey continues with association with highly experienced and valuable customers and an evolving and up-to-date supply chain, built by three ambitious and hardworking generations.



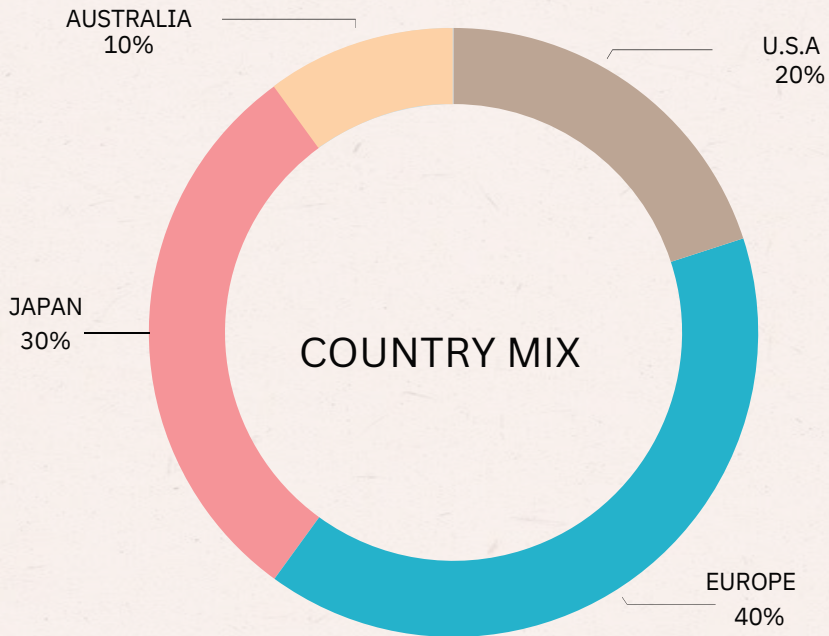
Established in
1990



4 Factories and
1 Design Studio



Employee Strength
- over 2000



DRESS
30%

HANDICRAFTS
30%

PORTFOLIO
DISTRIBUTION

BOTTOMS
10%

TOPS
20%

MENSWEAR
10%



PACIFIC DESIGN STUDIO



Pacific Design House is a team of passionate professionals who are very versatile with their designs. Designs are either made by following the client's specific brief, or we do our design explorations based on the forecast to create new fabrics, prints, surface techniques and silhouettes with the help of our efficient sampling unit.

We show the client our designs and ideas that would suit their requirements and price range. We also assist our clients in optimizing the developments in the final product.

GARMENT DEVELOPMENT



We are proficient in making complex woven garments. We have built a system in our organization which allows us to handle intricate styles with large quantities without compromising on the quality.

Pacific is equipped with the most advanced software for designing. We combine technologies like 3D CAD rendering, 3D optitex to craft the final product. The design team develops the most innovative and creative graphics and fits for the coming seasons.

CONCEPT DEVELOPMENT TO FINAL PRODUCT



ILLUSTRATION



SAMPLING



FINAL PRODUCT

FABRICS USED



COTTON



**VISCOSE AND
SPECIAL YARNS
(FILAMENT)**



VISCOSE WOVEN



JACQUARD AND LUREX



SILK AND BLENDED SILK

SURFACE TECHNIQUES



SMOCKING



QUILTING



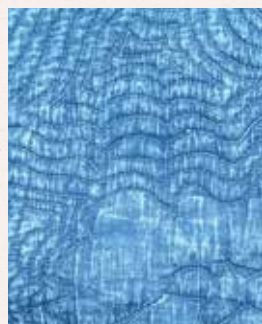
SCHIFFLI



APPLIQUE



DIP-DYE



WASHES

EMBROIDERY TECHNIQUES



BEAD WORK



CUTWORK



APPLIQUE AND QUILTING



ARI EMBROIDERY



JAND EMBROIDERY



DORI EMOIDERY ON MACHINE

PRINTING TECHNIQUES



ROTARY PRINT



BLOCK PRINT

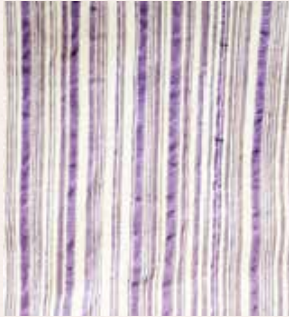


SCREEN PRINT



DIGITAL PRINT

WEAVING TECHNIQUES



YARN-DYED SEERSUCKER STRIPES



DOBBY



JACQUARD



YARN DYED DOUBLE CLOTH

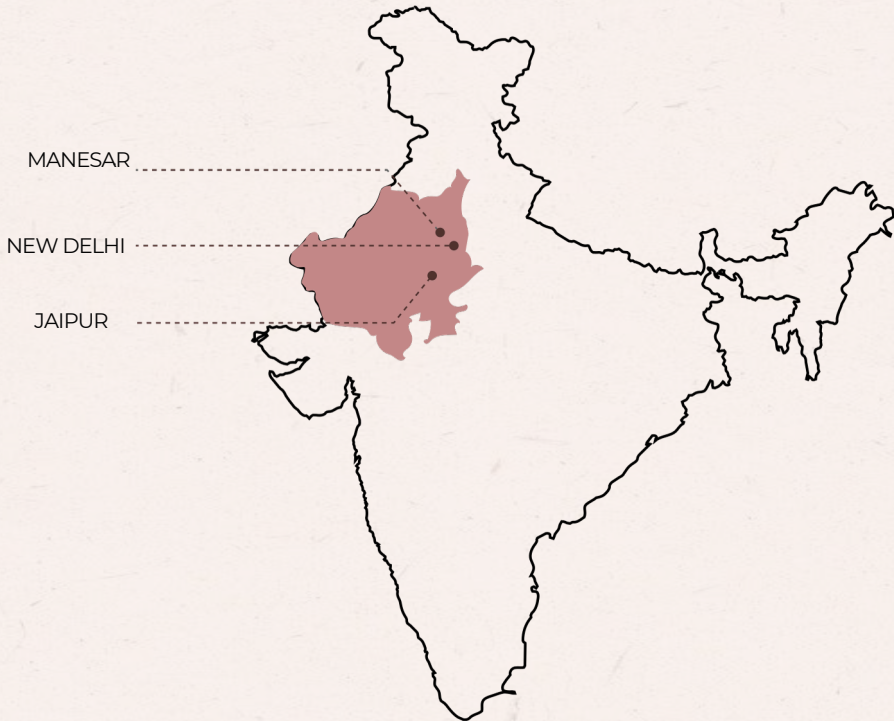


VELVET GEORGETTE LUREX STRIPES



JACQUARD LUREX

OUR PRODUCTION UNIT



JAIPUR OFFICE - Pacific Exports & Imports C552-A, Road
No- 6, Vishwakarma Industrial Area, Jaipur,
Rajasthan - 302013

.....

DELHI OFFICE - Pacific Exports & Imports 10165, Sumer
Plaza, Karol Bagh, New Delhi - 110005

DESIGN STUDIO - Pacific Exports & Imports A-26, Plot
No- 71/7, Rama Road, New Delhi- 110015

PRODUCTION UNIT - Pacific Exports & Imports
Plot No- 71/6-E, Rama Road, Near Kirti Nagar Industrial
Area, New Delhi - 110015

.....

PRODUCTION UNIT 2 - Pacific Exports & Imports
Plot No- 71/7-B, Rama Road, Near Kirti Nagar Industrial
Area, New Delhi - 110015

.....

MANESAR

Pacific Exports & Imports
128, Sector 5, IMT, Manesar, Haryana - 122050

MANESAR FACTORY



Manesar factory has a total of 200 machines and produces 52,000 garments per month. The factory has been supplying to international markets like France, Australia and Germany

JAIPUR FACTORY



Jaipur factory has a total of 350 machines and produces 65,000 garments and 30,000 textile based products per month. The factory has been supplying to international markets like Japan, Switzerland, France, Poland, Australia, Thailand, Denmark and Germany

DELHI FACTORY



Delhi factory has a total of 100 machines and produces 35,000 garments per month and other textile based products and this factory is where all the sampling is done. The factory has been supplying to international markets like France, Japan, Australia, and Germany

DELHI FACTORY - SOLAR POWER UNIT



The second factory in Kirti Nagar, Delhi is a green factory that will be completely reliant on solar power from the solar panels installed on the roof. The factory is under construction and will be fully functional by the 1st of August 2023. This unit is exclusively for our high end Japanese customers

CERTIFICATES



GOTS-CU1130122



SEDEX-ZC408787784

FABRIC CERTIFICATES



LICENSES AND CERTIFICATES



FACTORY LICENSE



APPROVAL OF
FACTORY BUILDING PLANS



FIRE SAFETY NOC



CERTIFICATE FOR
STABILITY



POLLUTION CERTIFICATE

OUR CLIENTS

ANTHROPOLOGIE

velvet
BY GRAHAM & PENCER

Himalaya
CLOTHING

LA PETITE ETOILE
PARIS

NOTSHY
CASHMERE

AKIKO

MALAIKA
world handicrafts

GA-ON

Deerberg

REDTAG.

florabella

Gysette

BABBAKI

STORLATIPIC

BERENICE.



CONVERSE
TOKYO



FITS















PACIFIC DESIGN HOUSE

email: info@pacificexportsimports.com